

# GOLD CUP MD LED

Architectural Outdoor



PROJECT:	
TYPE:	
PO#:	QTY:
COMMENTS:	

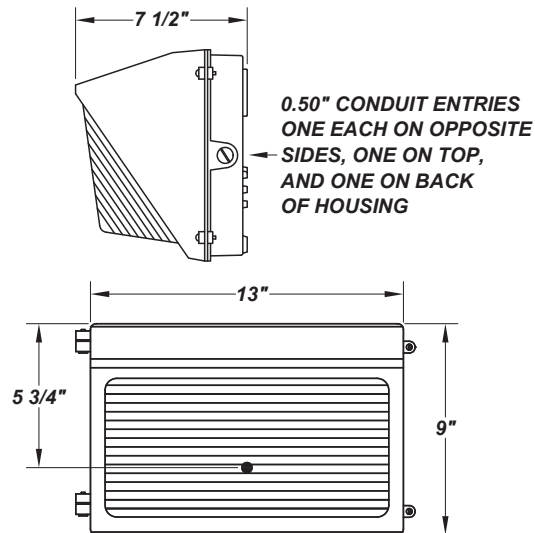
## FEATURES

- Cast-In Template
- Cast Aluminum Housing w/ Textured Polyester Bronze Powder Coat Finish
- CSA Listed Wet Location For Wall Mounting
- Emergency Battery Available
- Fully Gasketed
- L70 Life Time For 50,000hr
- LED Light Fixture
- Mounting Hardware Included
- Mounts Direct to Flat Surface w/ Four #8 Wall Anchors (Not Included)
- Ribbed Borosilicate Glass Diffuser
- Stainless Steel Zinc-Coated Screws



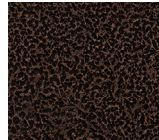
## LINE DRAWING

LINE DRAWING NOT TO SCALE

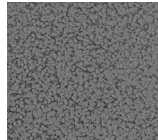


## FINISHES

Antique  
Copper



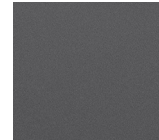
Antique  
Silver



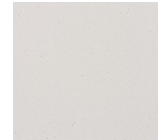
Bronze  
Mist



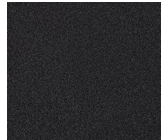
Matte  
Silver



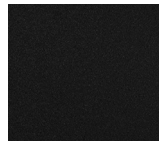
Sand



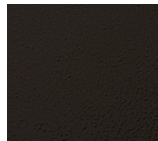
Swedish  
Steel



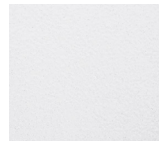
Textured  
Black



Textured  
Bronze



Textured  
White



For RAL Colors  
& Custom  
Match -  
Contact Teron  
Lighting Inc.

# GOLD CUP MD LED

Architectural Outdoor



Fixture Core

PROJECT:	
TYPE:	
PO#:	QTY:
COMMENTS:	

PRODUCT CODE	SOURCE/WATTAGE	VOLTAGE	DIMMING DRIVER
GPM - Gold Cup MD	L35.0 - 35W LED Module	100 - 277V	Not Applicable
ORDER INFO			
GPM	L35.0	100 - 277V	Not Applicable

Example ^ (may not represent a manufacturable product)

Aesthetics & Options

TRIM	FINISH	COLOR TEMP	OPTIONS
Not Applicable	<b>AC</b> - Antique Copper <b>AS</b> - Antique Silver <b>BT</b> - Bronze Mist <b>SM</b> - Matte Silver <b>SN</b> - Sand <b>SW</b> - Swedish Steel <b>TB</b> - Textured Black <b>BZ</b> - Textured Bronze (Standard) <b>TW</b> - Textured White	<b>40K</b> - 4000K Color Temp <b>50K</b> - 5000K Color Temp	<b>CGL</b> - Clear Glass Lens (Standard) <b>DIM</b> - Dimmable Driver (0 - 10V) <b>PDIM</b> - Pulse Width Dimmable Driver (0 - 10V) <b>SDIM</b> - Step-Dimmable Driver (Dimmable to 25% and 50%) <b>PCL120</b> - Photocell 120V <b>PCL277</b> - Photocell 277V <b>LXS</b> - Lexan Lens Shield <b>VS</b> - Internal Cut-off Visor <b>WGD</b> - Steel Wire Guard <b>TP</b> - Tamper-Proof Screw Set <b>F</b> - Fused <b>EB</b> - Bodine BSL23 - Will light Two 5.5W LED Strips (Please Specify Voltage)
ORDER INFO			
Not Applicable	AC	40K	CGL

Example ^ (may not represent a manufacturable product)

PROD	SOURCE	40K SPECS	50K SPECS
GPM	L35.0	<ul style="list-style-type: none"> <li>80 CRI Typ.</li> <li>40K - 4000K Color Temp</li> <li>3990 LED Source Lumens</li> <li>114 LED Source Lumens Per Watt</li> </ul>	<ul style="list-style-type: none"> <li>80 CRI Typ.</li> <li>50K - 5000K Color Temp</li> <li>4200 LED Source Lumens</li> <li>120 LED Source Lumens Per Watt</li> </ul>

REPLACEMENT PART	PART NO	NOTES
Ribbed Borosilicate Glass Diffuser	37127	Don't see the configuration you are looking for? Call us today at (513) 858-6004
Frosted Ribbed Borosilicate Glass Diffuser	3712762	
Internal Visor (Please Specify Color When Ordering)	5300799	



**TERONLIGHTING.COM**  
 33 DONALD DR, FAIRFIELD, OH 45014  
 P: 513.858.6004 F: 513.858.6038  
 E: SALES@TERONLIGHT.COM



We reserve the right to revise the design components of any product due to parts availability or change in UL standards, without assuming any obligation or liability to modify any products previously manufactured, and without notice.