

# GOLD CUP LG LED

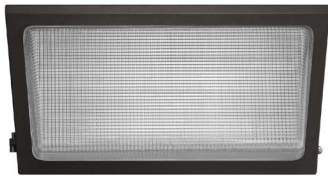
Architectural Outdoor



|           |      |
|-----------|------|
| PROJECT:  |      |
| TYPE:     |      |
| PO#:      | QTY: |
| COMMENTS: |      |

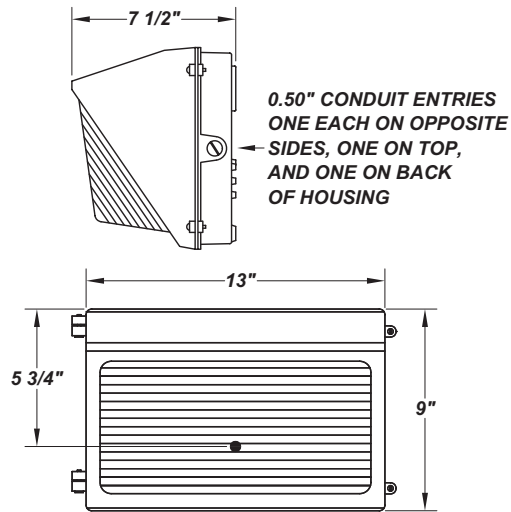
## FEATURES

- Cast Aluminum Housing w/ Textured Polyester Bronze Powder Coat Finish
- CSA Listed Wet Location For Wall Mounting
- Emergency Battery Available
- Fully Gasketed
- LED Light Fixture
- L70 Life Time For 50,000hr
- Mounts Direct to Flat Surface w/ Four #8 Wall Anchors (Not Included)
- Ribbed Borosilicate Glass Diffuser



## LINE DRAWING

LINE DRAWING NOT TO SCALE

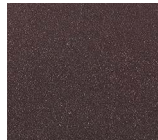


## FINISHES

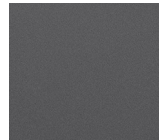
Antique Silver



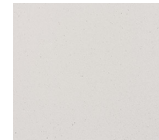
Bronze Mist



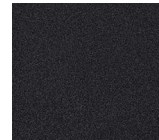
Matte Silver



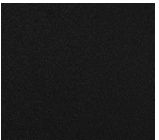
Sand



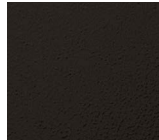
Swedish Steel



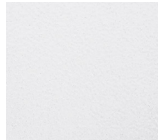
Textured Black



Textured Bronze



Textured White



For RAL Colors  
& Custom  
Match -  
Contact Teron  
Lighting Inc.

# GOLD CUP LG LED

Architectural Outdoor



Fixture Core

|           |      |
|-----------|------|
| PROJECT:  |      |
| TYPE:     |      |
| PO#:      | QTY: |
| COMMENTS: |      |

| PRODUCT CODE      | SOURCE/WATTAGE         | VOLTAGE    | DIMMING DRIVER |
|-------------------|------------------------|------------|----------------|
| GPL - Gold Cup LG | L48.0 - 48W LED Module | 120 - 277V | Not Applicable |
| ORDER INFO        |                        |            |                |
| GPL               | L48.0                  | 120 - 277V | Not Applicable |

Example ^ (may not represent a manufacturable product)

Aesthetics & Options

| TRIM           | FINISH   | COLOR TEMP  | OPTIONS   |
|----------------|--|---|---|
| Not Applicable | <b>AC</b> - Antique Copper<br><b>AS</b> - Antique Silver<br><b>BT</b> - Bronze Mist<br><b>SM</b> - Matte Silver<br><b>SN</b> - Sand<br><b>SW</b> - Swedish Steel<br><b>TB</b> - Textured Black<br><b>BZ</b> - Textured Bronze (Standard)<br><b>TW</b> - Textured White | <b>30K</b> - 3000K Color Temp<br><b>40K</b> - 4000K Color Temp<br><b>50K</b> - 5000K Color Temp | <b>SDIM</b> - Step-Dimmable Driver (Dimmable to 25% and 50%)<br><b>PCL120</b> - PhotoCell 120V<br><b>PCL277</b> - PhotoCell 277V<br><b>LXS</b> - Lexan Lens Shield<br><b>WGD</b> - Steel Wire Guard<br><b>TP</b> - Tamper-Proof Screw Set<br><b>F</b> - Fused<br><b>EBC</b> - 6W Integral EM Battery (-20°C) Available<br><b>EBW</b> - 5.1W Emergency Battery Available |
| ORDER INFO     |  |   |   |
| Not Applicable | AC   | 40K   | CGL   |

Example ^ (may not represent a manufacturable product)

| PROD | SOURCE | 40K SPECS   | 50K SPECS   |
|------|--------|---|---|
| GPL  | L48.0  | <ul style="list-style-type: none"> <li>80 CRI Typ.</li> <li>40K - 4000K Color Temp</li> <li>5368 LED Source Lumens</li> <li>111.8 LED Source Lumens Per Watt</li> </ul> | <ul style="list-style-type: none"> <li>80 CRI Typ.</li> <li>50K - 5000K Color Temp</li> <li>5650 LED Source Lumens</li> <li>117.7 LED Source Lumens Per Watt</li> </ul> |

| REPLACEMENT PART                   | PART NO | NOTES |
|------------------------------------|---------|-------|
| Ribbed Borosilicate Glass Diffuser | 37129   |       |

Don't see the configuration you are looking for?  
Call us today at (513) 858-6004



TERONLIGHTING.COM  
 33 DONALD DR, FAIRFIELD, OH 45014  
 P: 513.858.6004 F: 513.858.6038  
 E: SALES@TERONLIGHT.COM



We reserve the right to revise the design components of any product due to parts availability or change in UL standards, without assuming any obligation or liability to modify any products previously manufactured, and without notice.