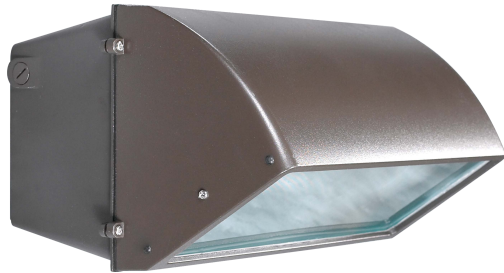


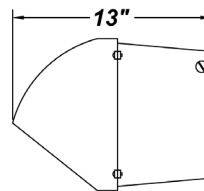
BRONZE CUP LG



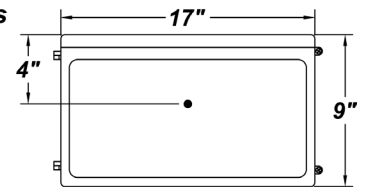
PROJECT :
TYPE :
ORDERING # :
COMMENTS :

FEATURES

- Cast Aluminum Housing w/ Textured Bronze Polyester Powder Coat Finish
- Clear Prismatic Borosilicate Glass Lens
- Fully Gasketed
- Stainless Steel Zinc-Coated Screws
- Mounts Direct to Flat Surface w/ Four #8 Wall Anchors (Not Included)
- Cast-In Template
- Lamps Included
- Integral EM Battery Available (2x42W Maximum Wattage)
- Electronic & HPS Wattages Are CSA Listed Wet Location For Wall Mount
- MH Wattages are CSA Listed Wet Location For Wall Mount With The Following Restrictions:
 - 150W & 250W May Include a Photocell And / or a 100W Quartz Lamp
 - 320W May Have a Photocell Only



0.50" Conduit Entries
One Each on Opposite Sides, Two on Top of Housing, and Two on Back of Housing



ORDERING INFORMATION

Example : (BPL250MH - 120H - TW)

Textured Bronze is Standard Finish

PRODUCT	SOURCE/WATTAGE	VOLTAGE	DIFFUSER	FINISH	OPTIONS
Bronze Cup Lg	BPL150MH - 150W MH BPL250MH - 250W MH BPL320MH - 320W MH BPL250 - 250W HPS BPL232X - (2) 32W TBX BPL142X - (1) 42W TBX BPL242X - (2) 42W TBX	<u>METAL HALIDE (MH)</u> 120V - 120V HPF 120H - MT HPF (Wired 120V) MTH - MT HPF (Wired 277V) 347H - MT HPF (Wired 347V) <u>HPS</u> 120V - 120V HPF 120H - MT HPF (Wired 120V) MTH - MT HPF (Wired 277V) (MT - Multi-Tap) <u>FLUORESCENT (F)</u> 120E - 120V Electronic 277E - 277V Electronic	Not Applicable	SM - Matte Silver TB - Textured Black AC - Antique Copper AS - Antique Silver BT - Bronze Mist CP - Copper SN - Sand SW - Swedish Steel BZ - Textured Bronze TW - Textured White RAL Colors or Custom Match - Consult Factory	41K - 4100K Color Temp.* 35K - 3500K Color Temp.* 30K - 3000K Color Temp.* 27K - 2700K Color Temp.* (Standard) F - Fused PCL120 - Photocell 120V PCL277 - Photocell 277V DIM - Dimming Ballast* (Electronic Only) QRS - Quartz Restrike (DC/Bay - Lamp Included) QZS - Quartz Socket Only EBW / EBC - Integral Emergency Battery** (Electronic Only) EBR - Remote Mount Battery (Field Installed) ** PST - Pulse Start Lamp & Ballast (MH Only) VS - Dark Sky Visor (Field Installed) W2L - Wire 2 Lamps to Integral Emergency Battery MSP - Program Start Ballast (Recommended for Motion Sensor) ***

REPLACEMENT PARTS

PART NO.

Clear Tempered Glass Diffuser	37034
Dark Sky Visor (Please Specify Color When Ordering) (Must Order Separately)	5302099

We reserve the right to revise the design or components of any product due to parts availability or change in UL standards, without assuming any obligation or liability to modify any products previously manufactured, and without notice.

NOTES

***Fluorescent Only**
****Emergency Battery Options**
 Initial light output in Emergency mode will last for a minimum of 90 minutes. 1 lamp wired unless ordered otherwise. The following are suitable for indoor and damp locations. Please refer to Bodine's specification sheet
EBW: Bodine's B94G (Electronic) - Temperature Rating (Ambient) 32° F - 131° F
EBC: Bodine's B4CF1 (Electronic) - Temperature Rating (Ambient) -4° F - 131° F
EBR: Bodine's B94CG (Electronic) - Temperature Rating (Ambient) 32° F - 122° F

ARRA 2009



BUY AMERICA ACT

*** For Electronic Wattage Fixtures Being Used in Conjunction With an Occupancy Sensor (Either Provided by us, or Your Own System), a Program Start Ballast is Recommended in Order to Maximize Lamp Life.