

CADDY MD LED

Architectural Outdoor



| | |
|-----------|------|
| PROJECT: | |
| TYPE: | |
| PO#: | QTY: |
| COMMENTS: | |

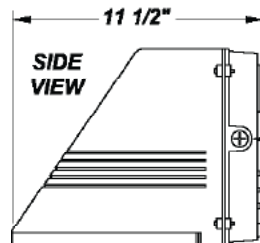
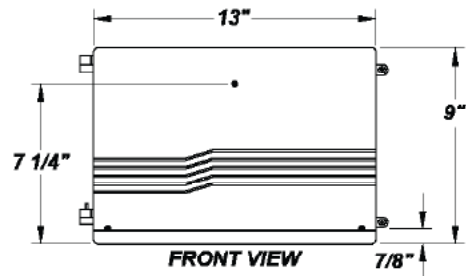
FEATURES

- Die-Cast Aluminum Housing w/ Textured Bronze Polyester Powder Coat Finish
- Clear Tempered Glass Lens
- Surge Protector
- Fully Gasketed
- Mounts Direct to Flat Surface w/ Three #8 Wall Anchors (Not Included)
- CSA Listed Wet Location For Wall Mounting (Down Light Only)
- Dark Sky Compliant
- Emergency Battery Available
- LED Light Fixture



LINE DRAWING

LINE DRAWING NOT TO SCALE



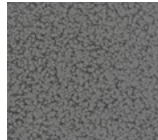
**0.50" CONDUIT ENTRIES
ONE EACH ON OPPOSITE
SIDES, ONE ON TOP,
AND ONE ON BACK
OF HOUSING**

FINISHES

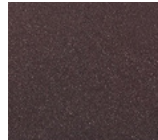
Antique Copper



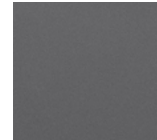
Antique Silver



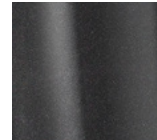
Bronze Mist



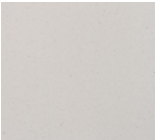
Matte Silver



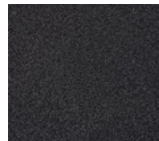
Metallic Black



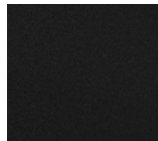
Sand



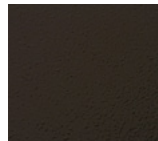
Swedish Steel



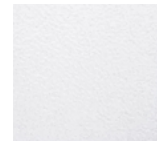
Textured Black



Textured Bronze



Textured White



For RAL Colors & Custom Match - Contact Teron Lighting Inc.

CADDY MD LED

Architectural Outdoor



Fixture Core

| | |
|-----------|------|
| PROJECT: | |
| TYPE: | |
| PO#: | QTY: |
| COMMENTS: | |

| PRODUCT CODE | SOURCE/WATTAGE | VOLTAGE | DIMMING DRIVER |
|----------------|---|------------|----------------|
| CDT - Caddy MD | L35.0 - 35W @ 1050mA 0-10V Dimming Driver | 120 - 277V | 0-10V Dimming |
| ORDER INFO | | | |
| CDT | L35.0 | 120 - 277V | Not Applicable |

Example ^ (may not represent a manufacturable product)

Aesthetics & Options

| TRIM | FINISH | COLOR TEMP | OPTIONS |
|----------------|--|---|--|
| Not Applicable | AC - Antique Copper AS - Antique Silver BT - Bronze Mist MB - Metallic Black SM - Matte Silver SN - Sand SW - Swedish Steel TB - Textured Black | BZ - Textured Bronze (Standard) TW - Textured White 30K - 3000K Color Temp 40K - 4000K Color Temp 50K - 5000K Color Temp | DIM - 0-10V Dimming Driver EBC - 10W Emergency Battery Available (-20°C) EBCA12 - Title 20 Compliant 12 Watt Integral Battery EB - 5.1W Emergency Battery Available F - Fused FAL - Frosted Acrylic Lens PCL - Photocell PDIM - Pulse Width Dimmable Driver (0 - 10V) |
| ORDER INFO | | | |
| Not Applicable | AC | 30K | DIM |

Example ^ (may not represent a manufacturable product)

| PROD | SOURCE | 30K SPECS | | | | |
|------|--------|--|--|--|--|--|
| CDT | L35.0 | <ul style="list-style-type: none"> 30K - 3000K Color Temp 4608 LED Source Lumens 132 LED Source Lumens Per Watt | | | | |

| REPLACEMENT PART | PART NO | NOTES |
|--------------------------------------|---------|-------|
| Clear Tempered Glass Lens (Standard) | 37049 | |
| Frosted Acrylic Lens | 3058562 | |

Don't see the configuration you are looking for?
Call us today at (513) 858-6004



TERONLIGHTING.COM
 33 DONALD DR, FAIRFIELD, OH 45014
 P: 513.858.6004 F: 513.858.6038
 E: SALES@TERONLIGHT.COM



We reserve the right to revise the design components of any product due to parts availability or change in UL standards, without assuming any obligation or liability to modify any products previously manufactured, and without notice.