

CADDY MD LED

Architectural Outdoor



PROJECT:	
TYPE:	
PO#:	QTY:
COMMENTS:	

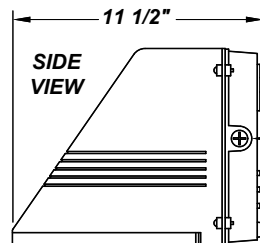
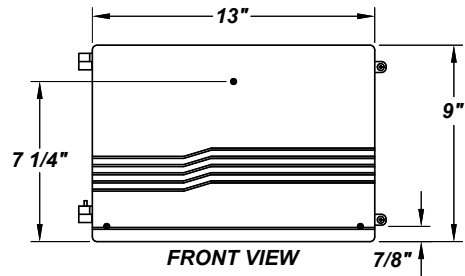
FEATURES

- Die-Cast Aluminum Housing w/ Textured Bronze Polyester Powder Coat Finish
- Clear Tempered Glass Lens
- Surge Protector
- Fully Gasketed
- Mounts Direct to Flat Surface w/ Three #8 Wall Anchors (Not Included)
- CSA Listed Wet Location For Wall Mounting (Down Light Only)
- Dark Sky Compliant
- Emergency Battery Available
- LED Light Fixture



LINE DRAWING

LINE DRAWING NOT TO SCALE



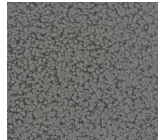
0.50" CONDUIT ENTRIES
ONE EACH ON OPPOSITE
SIDES, ONE ON TOP,
AND ONE ON BACK
OF HOUSING

FINISHES

Antique Copper



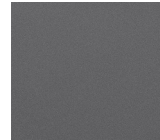
Antique Silver



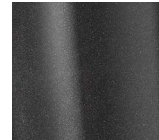
Bronze Mist



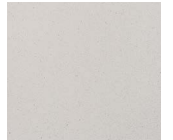
Matte Silver



Metallic Black



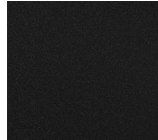
Sand



Swedish Steel



Textured Black



Textured Bronze



Textured White



For RAL Colors & Custom Match - Contact Teron Lighting Inc.

CADDY MD LED

Architectural Outdoor



Fixture Core

PROJECT:	
TYPE:	
PO#:	QTY:
COMMENTS:	

PRODUCT CODE	SOURCE/WATTAGE	VOLTAGE	DIMMING DRIVER
CDT - Caddy MD	L35.0 - 35W @ 1050mA Dimming Driver	120 - 277V	Not Applicable
ORDER INFO			
CDT	L35.0	120 - 277V	Not Applicable

Example ^ (may not represent a manufacturable product)

Aesthetics & Options

TRIM	FINISH	COLOR TEMP	OPTIONS
Not Applicable	AC - Antique Copper AS - Antique Silver BT - Bronze Mist MB - Metallic Black SM - Matte Silver SN - Sand SW - Swedish Steel TB - Textured Black	BZ - Textured Bronze (Standard) TW - Textured White 30K - 3000K Color Temp 40K - 4000K Color Temp 50K - 5000K Color Temp	DIM - 0-10V Dimming Driver EBC - 10W Emergency Battery Available (-20°C) EBCA12 - Title 20 Compliant Integral Battery EB - 5.1W Emergency Battery Available F - Fused FAL - Frosted Acrylic Lens PCL - Photocell PDIM - Pulse Width Dimmable Driver (0 - 10V)
ORDER INFO			
Not Applicable	AC	30K	DIM

Example ^ (may not represent a manufacturable product)

PROD	SOURCE	30K SPECS			
CDT	L35.0	<ul style="list-style-type: none"> 30K - 3000K Color Temp 4608 LED Source Lumens 132 LED Source Lumens Per Watt 			

REPLACEMENT PART	PART NO	NOTES
Clear Tempered Glass Lens (Standard)	37049	
Frosted Acrylic Lens	3058562	

Don't see the configuration you are looking for?
Call us today at (513) 858-6004



TERONLIGHTING.COM
 33 DONALD DR, FAIRFIELD, OH 45014
 P: 513.858.6004 F: 513.858.6038
 E: SALES@TERONLIGHT.COM



We reserve the right to revise the design components of any product due to parts availability or change in UL standards, without assuming any obligation or liability to modify any products previously manufactured, and without notice.