

# TURNBERRY MSI LED 50"

Architectural Indoor



PROJECT:

TYPE:

PO#:

QTY:

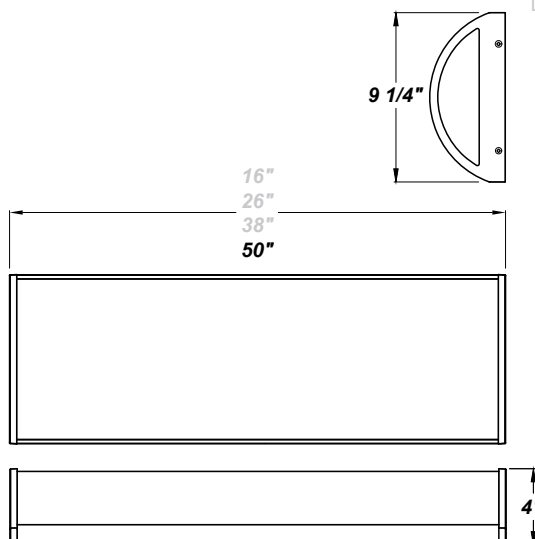
COMMENTS:

## FEATURES

- 120V - 277V
- ADA Compliant
- Aluminum LED Mounting Plate
- CSA Listed Damp Location For Wall or Ceiling Mount
- Die-Formed Steel Housing w/ Textured White Polyester Powder Coat Finish
- Die Cast Aluminum End Caps w/ Textured White Polyester Powder Coat Finish
- Emergency Driver Available
- Fixture Mounts Directly to Surface w/ Two Wall Anchors (Not Included)
- High Impact White Acrylic Diffuser (50% DR Acrylic) w/ Inner Frosted Diffuser
- [Internal Motion Sensor](#)
- LED Light Fixture
- Recessed Stainless Steel Screws
- Surge Protector

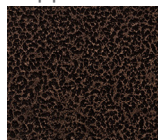
## LINE DRAWING

LINE DRAWING NOT TO SCALE

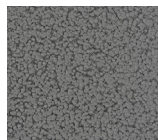


## FINISHES

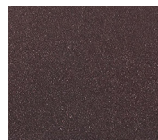
Antique  
Copper



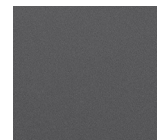
Antique  
Silver



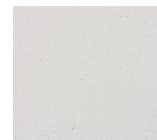
Bronze  
Mist



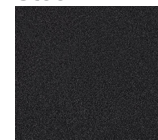
Matte  
Silver



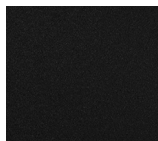
Sand



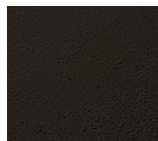
Swedish  
Steel



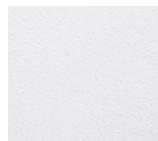
Textured  
Black



Textured  
Bronze



Textured  
White



For RAL Colors  
& Custom  
Match -  
**Contact Teron  
Lighting Inc.**

# TURNBERRY MSI LED 50"

Architectural Indoor



Fixture Core

PROJECT:	
TYPE:	
PO#:	QTY:
COMMENTS:	

PRODUCT CODE	SOURCE/WATTAGE	VOLTAGE	DIMMING DRIVER
TRN50 - Turnberry 50"	L46.0-ZE1400 - 46.0W LED Strip(s) @ 1400mA Line Voltage 4-Wire Dimming Driver (Dimmable 0 - 10V) ** L52.0-TE1050 - 52.0W LED Strip(s) @ 1050mA ELV Low Voltage 2-Wire Dimming Electronic Driver (Trailing Edge) (347V Only) L60.0-ZE1750 - 60.0W LED Strip(s) @ 1750mA Line Voltage 4-Wire Dimming Driver (Dimmable 0 - 10V)	120-277V 347V - For 52.0W Only (50 / 60Hz)	Not Applicable
ORDER INFO			
TRN50	L46.0-ZE1400	120-277V	Not Applicable

Example ^ (may not represent a manufacturable product)

Aesthetics & Options

TRIM	FINISH	COLOR TEMP	OPTIONS
Not Applicable	AC - Antique Copper TW - Textured White (Standard) AS - Antique Silver BT - Bronze Mist SM - Matte Silver SN - Sand SW - Swedish Steel TB - Textured Black BZ - Textured Bronze	30K - 3000K Color Temp 35K - 3500K Color Temp 40K - 4000K Color Temp	EB10 - Iota ILB-CP10 10W LED Driver EB12 - Iota ILB-CP12 12W LED Driver F - Fused MSI - Steinel HFLUM2-WR Internal Motion Sensor OEL - Single End Window TEL - Twin End Windows (Both Ends) TP - Tamper Resistant Screws
ORDER INFO			
Not Applicable	AC	27K	EB10

Example ^ (may not represent a manufacturable product)

PROD	SOURCE	30K SPECS				
TRN50	L46.0	• 30K - 3000K Color Temp • 7590 LED Source Lumens • 165 LED Source Lumens Per Watt				
	L52.0	• 30K - 3000K Color Temp • 5693 LED Source Lumens • 109.5 LED Source Lumens Per Watt				
	L60.0	• 30K - 3000K Color Temp • 9788 LED Source Lumens • 158.1 LED Source Lumens Per Watt				

REPLACEMENT PART	PART NO	NOTES
4' Acrylic LED Lens Assembly	38218	** EB Option Available
Frosted Polycarbonate End Diffuser (For OEL / TEL)	3410862	
		Don't see the configuration you are looking for? Call us today at (513) 858-6004



TERONLIGHTING.COM  
33 DONALD DR, FAIRFIELD, OH 45014  
P: 513.858.6004 F: 513.858.6038  
E: SALES@TERONLIGHT.COM



We reserve the right to revise the design components of any product due to parts availability or change in UL standards, without assuming any obligation or liability to modify any products previously manufactured, and without notice.