

BISCAYNE N MSE LED 49"

Architectural Indoor



PROJECT:	
TYPE:	
PO#:	QTY:
COMMENTS:	



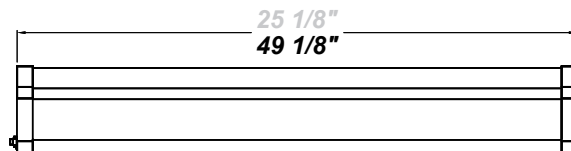
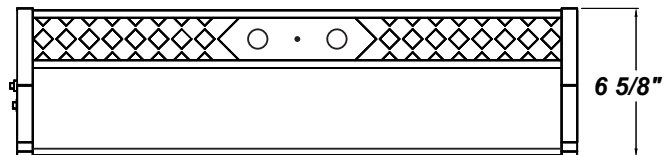
FEATURES

- [External Motion Sensor](#)
- Steel Housing and End Caps with Matte Silver Powder Coat Finish
- High Impact Frosted Acrylic Diffuser
- Steel Reflector Plate with Hi-Reflectance White Powder Coat Finish
- Mounts Directly to Wall or Ceiling with Four Wall Anchors (Not Included)
- Constant Current
- Dimmable 0-10V, 10-90% Bi-Level Step Dimming - 10% increments
- IES Files Available
- ADA Compliant
- CSA Listed Damp Location
- LED Light Fixture
- Vandal Resistant

LINE DRAWING

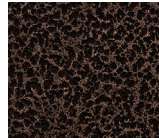


LINE DRAWING NOT TO SCALE

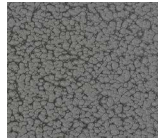


FINISHES

Antique Copper



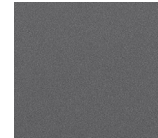
Antique Silver



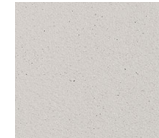
Bronze Mist



Matte Silver



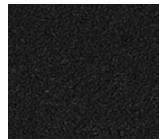
Sand



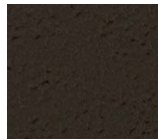
Swedish Steel



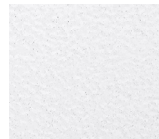
Textured Black



Textured Bronze



Textured White



For RAL Colors & Custom Match - Contact Teron Lighting Inc.

BISCAYNE N MSE LED 49"

Architectural Indoor



Fixture Core

PROJECT:	
TYPE:	
PO#:	QTY:
COMMENTS:	

PRODUCT CODE	SOURCE/WATTAGE	VOLTAGE	DIMMING BALLAST
BSCN48 - Biscayne N 48"	L38.3-ZE1050 - 42W @ 1050mA Constant Current Dimming Electronic Driver (Dimmable 0-10V) L34.7-TE950 - 40W @ 950mA Constant Current ELV Dimming Electronic Driver	120V 277V 347V	SDxx - Bi-Level Step Dimming from 10-90% in increments of 10% (replace xx in ordering code with requested dimming percentage)
ORDER INFO			
BSCN48	L38.3-ZE1050	120V	SD50

Example ^ (may not represent a manufacturable product)

Aesthetics & Options

TRIM	FINISH	COLOR TEMP	OPTIONS
MSE - Watt-Stopper FS505 External Motion Sensor HCB MSE - Honeycomb Pattern w/ External Motion Sensor DMD MSE - Diamond Pattern w/ External Motion Sensor PRF MSE - Perforated Pattern w/ External Motion Sensor	AC - Antique Copper AS - Antique Silver BT - Bronze Mist SM - Matte Silver (Standard) SN - Sand, SW - Swedish Steel TB - Textured Black BZ - Textured Bronze TW - Textured White	27K - 2700K Color Temp. 30K - 3000K Color Temp. 35K - 3500K Color Temp. 40K - 4000K Color Temp. 51K - 5100K Color Temp.	FAL - Frosted Acrylic Lens (Standard) WAL - Frosted & White Acrylic Lens Assembly EB - BSL310 Emergency Driver TP - Tamper Resistant Screws F - Fused
ORDER INFO			
MSE	AC	35K	FAL-WAL

Example ^ (may not represent a manufacturable product)

PROD	SOURCE	27K SPECS	30K SPECS	35K SPECS	40K SPECS	51K SPECS
BSCN48	L38.3-ZE1050	<ul style="list-style-type: none"> • 27K - 2700K Color Temp. Nominal • 3307 Estimated Delivered Lumens • 44.6 Estimated Delivered Lumens Per Watt 	<ul style="list-style-type: none"> • 30K - 3000K Color Temp. Nominal • 3368 Estimated Delivered Lumen • 44.6 Estimated Delivered Lumens Per Watt 	<ul style="list-style-type: none"> • 35K - 3500K Color Temp. Nominal • 3429 Estimated Delivered Lumens • 44.6 Estimated Delivered Lumens Per Watt 	<ul style="list-style-type: none"> • 40K - 4000K Color Temp. Nominal • 3552 Estimated Delivered Lumens • 44.6 Estimated Delivered Lumens Per Watt 	<ul style="list-style-type: none"> • 50K - 5000K Color Temp. Nominal • 3674 Estimated Delivered Lumens • 44.6 Estimated Delivered Lumens Per Watt

REPLACEMENT PART	PART NO	NOTES
Frosted 4' Acrylic Diffuser	3001562	*Don't see the configuration you are looking for? Call us today at (513) 858-6004
White 4' Acrylic Lens Assembly	38113	



TERONLIGHTING.COM
 33 DONALD DR, FAIRFIELD, OH 45014
 P: 513.858.6004 F: 513.858.6038
 E: SALES@TERONLIGHT.COM



We reserve the right to revise the design components of any product due to parts availability or change in UL standards, without assuming any obligation or liability to modify any products previously manufactured, and without notice.

BISCAYNE N LED MSE 49"

Architectural Indoor



PROJECT:	
TYPE:	
PO#:	QTY:
COMMENTS:	



Biscayne N DMD
MSE



Biscayne N HCB
MSE



Biscayne N PRF MSE