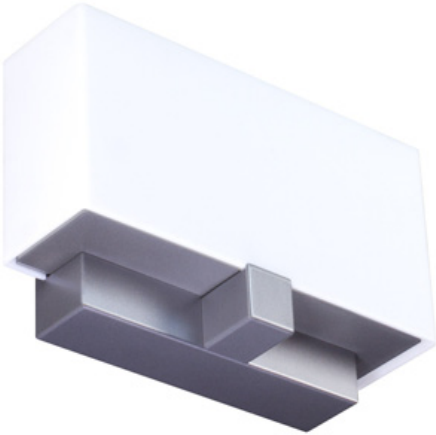


PROJECT :
TYPE :
ORDERING # :
COMMENTS :

BEL AIR M LED

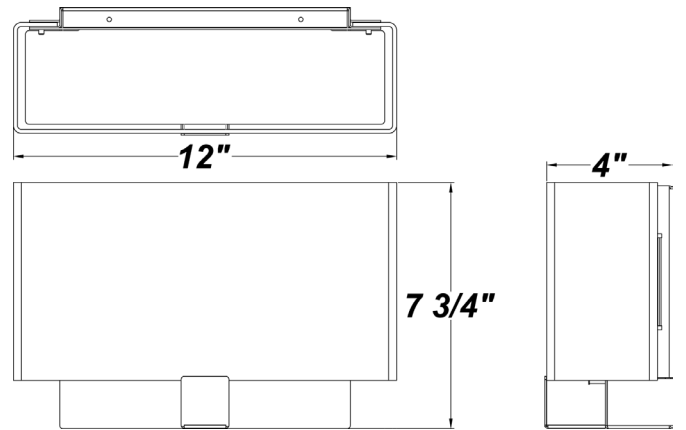


FEATURES

- Frosted White Acrylic Diffuser
- Steel Mounting Pan w/ Matte Silver Powder Coat Finish
- Aluminum Reflective LED Mount Plate
- Steel Trim w/ Matte Silver Powder Coat Finish
- Open Top
- Mounts Directly to 4" Junction Box (By Others)
- Mounting Hardware Included
- Pending CSA Listed Dry Location For Wall Mounting
- ADA Compliant
- Awaiting IES Files, DLC, Lighting Facts, And Title 24 Labeling / Certification

DIMMING FEATURES

- Dimmable 0 - 10V
- Over-Current, Over-Voltage, and Short Circuit Protection
- Constant Current
- UL Class 2 Driver - Power Factor >.90
- Estimated 50,000 Hours Life (L70)



Shown w/ Optional Acrylic Top Cover

ORDERING INFORMATION

Example : (BLRM - L25.0 - 120-277V - ZE700 - WAL - BZ - 35K) Matte Silver is Standard Finish

PRODUCT	SOURCE/WATTAGE	VOLTAGE	DRIVER OPTIONS	DIFFUSER	FINISH	OPTIONS
Bel Air M	L25.0 - (2) 12.5W LED Modules	120 - 277V (120 - 277V Dimmable For 0-10V)	ZE700 - 700mA Line Voltage 2-Wire Dimming Driver (For L25.0) (Dimmable 0 - 10V)	WAL - White Acrylic Lens	SM - Matte Silver TB - Textured Black AC - Antique Copper AS - Antique Silver BT - Bronze Mist CP - Copper KC - Kenworth Chrome SN - Sand SW - Swedish Steel BZ - Textured Bronze TW - Textured White RAL Colors or Custom Match - Consult Factory	27K - 2700K Color Temp. 30K - 3000K Color Temp. 35K - 3500K Color Temp. 40K - 4000K Color Temp. F - Fused TCV - White Acrylic Top Cover



REPLACEMENT PARTS	PART NO.
White Acrylic Lens	3045360

NOTES

We reserve the right to revise the design or components of any product due to parts availability or change in UL standards, without assuming any obligation or liability to modify any products previously manufactured, and without notice.



PROJECT :
TYPE :
ORDERING # :
COMMENTS :

PRODUCT	SOURCE/WATTAGE	27K SPECIFICATIONS	30K SPECIFICATIONS	35K SPECIFICATIONS
Bel-Air M LED (BLRM)	L25.0 - (2) 12.5W Modules	L25.0	L25.0	L25.0
		27K - 2700K Color Temp. - 24 fV, Color Temp = 2700K Nominal - Constant Current 700 Milliamps Driver - 24W Input = 2543 LED Lumens - Estimated 106 Board Lumens Per Watt	30K - 3500K Color Temp. - 24 fV, Color Temp = 3000K Nominal - Constant Current 700 Milliamps Driver - 24W Input = 2734.2 LED Lumens - Estimated 113.9 Board Lumens Per Watt	35K - 3500K Color Temp. - 24 fV, Color Temp = 3500K Nominal - Constant Current 700 Milliamps Driver - 24W Input = 2876 LED Lumens - Estimated 119.8 Board Lumens Per Watt

PRODUCT	SOURCE/WATTAGE	40K SPECIFICATIONS
Bel-Air M LED (BLRM)	L25.0 - (2) 12.5W Modules	L25.0
		40K - 4000K Color Temp. - 24 fV, Color Temp = 4000K Nominal - Constant Current 700 Milliamps Driver - 24W Input = 2953 LED Lumens - Estimated 123 Board Lumens Per Watt

ARRA 2009



BUY AMERICA ACT C US