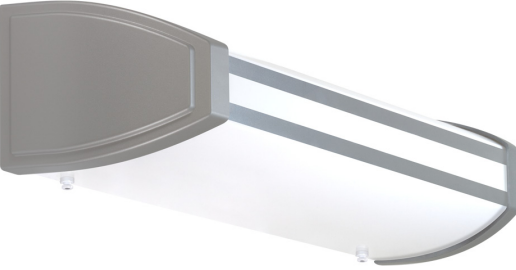


PROJECT :
TYPE :
ORDERING # :
COMMENTS :

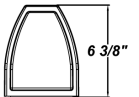
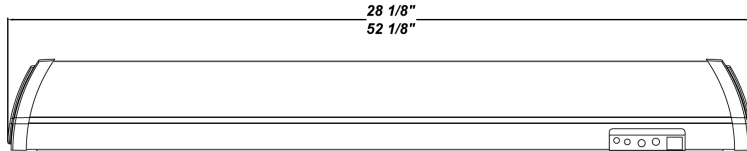
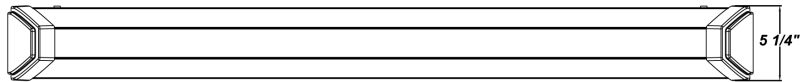
DUNBAR



LINEAR FLUORESCENT

FEATURES

- Steel Housing w/ White Powder Coat Finish
- Steel Mounting Pan w/ Hi-Reflectance White Powder Coat Finish
- White Acrylic / DR Extruded Diffuser w/ Brushed Nickel Finished End Caps And Brushed Nickel / White Decorative Center Trim
- Up / Down Lighting
- Mounts Directly to Surface w/ Two Wall Anchors (Not Included)
- Lamps Not Included
- CSA Listed Dry Location For Wall Mount Only



ORDERING INFORMATION

Example : (DNB48332E - 120E - WSW - F) **Brushed Nickel End Caps w/ Brushed Nickel / White Center Trim is Standard**

PRODUCT	SOURCE/WATTAGE	VOLTAGE	DIMMING CONFIG	FINISH	OPTIONS
DNB24 (2' Fixture)	DNB24217E - (2) 17W T8 DNB24317E - (3) 17W T8 DNB24214E - (2) 14W T5	120E - 120V Electronic 277E - 277V Electronic 347E - 347V Electronic	SDB10** - Lamps Set at 10% Output w/ No Occupancy & 100% Outout w/ Motion Sensor Occupancy Read (See Pg. 2) (120V / 277V Only)	BNW - Brushed Nickel End Caps w/ Nickel And White Center Trim (Standard)	CO - Convenience Outlet F - Fused MSW - Multi-Lamp Switch w/ Pull Chain (For 3-Lamp Fixtures) 2SW - 2-Lamp Switch w/ Pull Chain (For 7W or 9W Night Light) MSI - Steinel HFLUM2-WR Internal Motion Sensor (120V / 277V Only) (Wet Location) MSI is For Use With The Following: - All 2 Lamp Wattages - NOT Available For Fixtures Ordered w/ BFL Option EB - Integral Emergency Battery** (Consult Factory For Application Specs / Battery Option) TP - Tamper Resistant Screws W2L - Wire 2 Lamps to Integral Emergency Battery (T8 Lamping Only) MSP - Program Start Ballast (Standard w/ Motion Sensor) *** NLT - Night Light (7W or 9W) BFL - Internal Baffle
DNB48 (4' Fixture)	DNB48232E - (2) 32W T8 DNB48332E - (3) 32W T8 DNB48228E - (2) 28W T5		SDB40** - Lamps Set at 40% Output w/ No Occupancy & 100% Outout w/ Motion Sensor Occupancy Read (See Pg. 2) (120V / 277V Only) SDB50** - Lamps Set at 50% Output w/ No Occupancy & 100% Outout w/ Motion Sensor Occupancy Read (See Pg. 2) (120V / 277V Only) MS2B - 1 Lamp at 100% Constant Output, and 1 Lamp Connected to Motion Sensor (Requires 2 Ballasts) Please Refer to Page 2 for Step-Dim & MS2B Specifications, Options, and Restrictions	WSW - White End Caps w/ Solid White Center Trim Custom Finish Options - Consult Factory	

NOTES

*** For Electronic Wattage Fixtures Being Used in Conjunction With an Occupancy Sensor (Either Provided by us, or Your Own System), a Program Start Ballast is Recommended in Order to Maximize Lamp Life.

We reserve the right to revise the design or components of any product due to parts availability or change in UL standards, without assuming any obligation or liability to modify any products previously manufactured, and without notice.

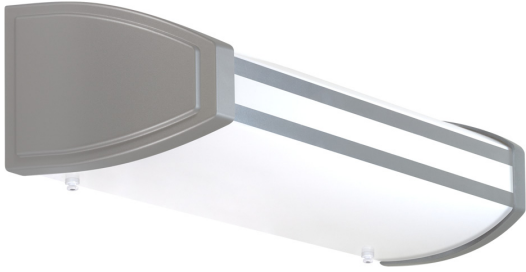
ARRA 2009



BUY AMERICA ACT



DUNBAR



PROJECT :
TYPE :
ORDERING # :
COMMENTS :

DIMMING APPLICATIONS & RESTRICTIONS

- Step-Dimming is available at 10% and 40% for 25W and 32W T8 linear lamps
 - Emergency Battery is not available for use with the 10% and 40% Step-Dim option
 - Ballast used is the **Robertson brand #PSL232T8MV3D**
- Step-Dimming is available at 50% for 17W, 25W, and 32W T8 Linear Lamps
 - Emergency Battery is available for use with the 50% Step-Dim option
 - Ballast used is the **Universal brand #B232PUS50-A**
- Step-Dimming is available at 50% for 28W T5 Linear Lamps
 - Emergency Battery is available for use with the 50% Step-Dim option
 - Ballast used is the **Philips Advance brand #IOP-2S28-95-SC-SD**
- All 3 ballasts meet California's Title 24 requirement by reducing power by 50% or more

MOTION SENSOR WITH 2 BALLASTS "MS2B" APPLICATIONS & RESTRICTIONS

- The "MS2B" option is intended to have one lamp providing 100% constant light output, while the other lamp is connected to the Motion Sensor. Two ballasts are required with this option
- Emergency Battery is available in conjunction with the "MS2B" option for 52" fixtures
- Emergency battery is not available for 26" fixtures in conjunction with the "MS2B" option due to fixture space restrictions

REPLACEMENT PARTS

PART NO.

2' White Acrylic Diffuser w/ White / Brushed Nickel Trim	3045319
2' White Acrylic Diffuser w/ Solid White Trim	3045360
4' White Acrylic Diffuser w/ White / Brushed Nickel Trim	3045419
4' White Acrylic Diffuser w/ Solid White Trim	3045460

We reserve the right to revise the design or components of any product due to parts availability or change in UL standards, without assuming any obligation or liability to modify any products previously manufactured, and without notice.

NOTES

****Emergency Battery Options**

Initial light output in Emergency mode will last for a minimum of 90 minutes. 1 lamp wired unless ordered otherwise. The following are suitable for indoor and damp locations. Please refer to Bodine's specification sheet
EB: Bodine's B50 (Electronic) - Temperature Rating (Ambient) 32° F - 131° F

ARRA 2009



BUY AMERICA ACT

