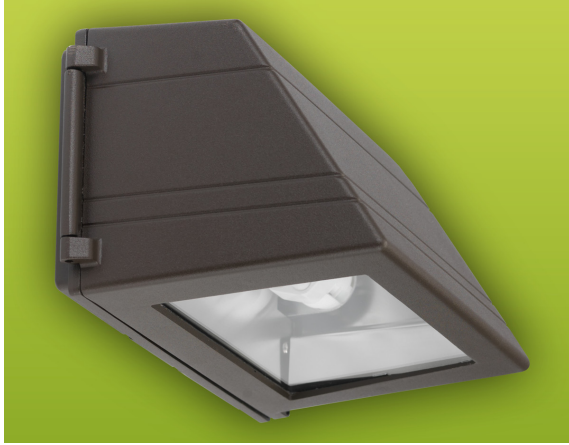


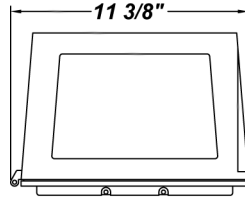
CADDY M



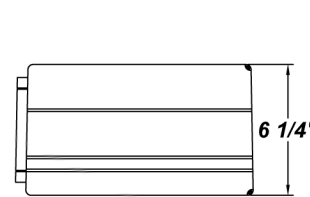
COMPACT FLUORESCENT & HID

FEATURES

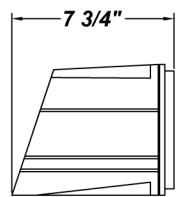
- Die-Cast Aluminum Housing w/ Textured Bronze Polyester Powder Coat Finish
- Clear Tempered Glass Lens
- Aluminum Hammertone Reflectors
- Fully Gasketed
- Mounts Direct to Flat Surface w/Three #8 Wall Anchors (Not Included)
- Lamps Included
- CSA Listed Wet Location For Wall Mounting



BOTTOM VIEW



FRONT VIEW



SIDE VIEW

ORDERING INFORMATION

Example : (CDM50MH - 120H - TB)

Textured Bronze is Standard Finish

PRODUCT	SOURCE/WATTAGE	VOLTAGE	DIFFUSER	FINISH	OPTIONS
Caddy M	CDM50MH - 50W MH CDM70MH - 70W MH	<u>METAL HALIDE (MH)</u> 120H - MT HPF (Wired 120V) MTH - MT HPF (Wired 277V)	Not Applicable	SM - Matte Silver TB - Textured Black AC - Antique Copper AS - Antique Silver BT - Bronze Mist CP - Copper SN - Sand SW - Swedish Steel BZ - Textured Bronze TW - Textured White RAL Colors or Custom Match - Consult Factory	41K - 4100K Color Temp.* (Standard) 35K - 3500K Color Temp.* 30K - 3000K Color Temp.* 27K - 2700K Color Temp.* F - Fused* (Electronic Wattages Only) EBR - Remote Mount Battery (Electronic Wattages Only) (Field Installed)** MSP - Program Start Ballast (Recommended for Motion Sensor)***
	CDM50 - 50W HPS CDM70 - 70W HPS	<u>HPS</u> 120V - 120V HPF 120H - MT HPF (Wired 120V) MTH - MT HPF (Wired 277V) (MT - Multi-Tap)			
	CDM126X - (1) 26W TBX CDM132X - (1) 32W TBX CDM142X - (1) 42W TBX CDM213Q - (2) 13W QE CDM218X - (2) 18W TBX CDM226X - (2) 26W TBX	<u>FLUORESCENT (F)</u> 120E - Electronic 120V 277E - Electronic 277V			

REPLACEMENT PARTS PART NO.

Replacement Clear Tempered Glass Lens 37067

We reserve the right to revise the design or components of any product due to parts availability or change in UL standards, without assuming any obligation or liability to modify any products previously manufactured, and without notice.

NOTES

***Electronic Only**

****Emergency Battery Options**

Initial light output in Emergency mode will last for a minimum of 90 minutes. The following are suitable for indoor and damp locations. Please refer to Bodine's specification sheet

EBR:

Bodine's B94CG (Electronic) - Temperature Rating (Ambient) 32° F - 122° F

*** For Electronic Wattage Fixtures Being Used in Conjunction With an Occupancy Sensor (Either Provided by us, or Your Own System), a Program Start Ballast is Recommended in Order to Maximize Lamp Life.

ARRA 2009



BUY AMERICA ACT