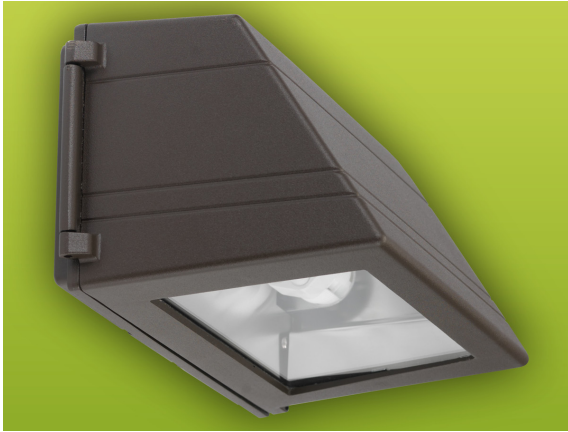


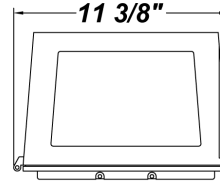
PROJECT :
TYPE :
ORDERING # :
COMMENTS :

CADDY M LED

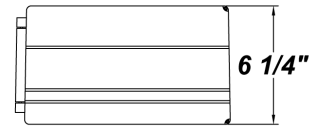


FEATURES

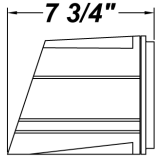
- Die-Cast Aluminum Housing w/ Textured Bronze Polyester Powder Coat Finish
- Clear Tempered Glass Lens
- Fully Gasketed
- Aluminum Heat-Sink Plate
- Mounts Direct to Flat Surface w/Three #8 Wall Anchors (Not Included)
- Thermal Compensation Technology Ensures Longer LED Lifetime, Which is Ideal For Fixtures Being Placed in Area With Fluctuating or Higher Ambient Temperatures
- 100V - 277V
- 40W Driver
- Surge Protector
- CSA Approved Wet Location For Wall Mounting



BOTTOM VIEW



FRONT VIEW



SIDE VIEW

ORDERING INFORMATION

Example : (CDM - L25.2 - 100V - 277V - CGL - BT - 51K)

Textured Bronze is Standard Finish

PRODUCT	SOURCE/WATTAGE	VOLTAGE	DIFFUSER	FINISH	OPTIONS / SPECS
Caddy M	L25.2 - (6) 4.2W LED Modules 4.2W LED Modules - (LM80 Standard) **40,000 Hours(L70) Please See the "Options / Specs" Column For Lumen Specifications	100V - 277V Please See "Options / Specs" Column For Voltage Specifications	CGL - Clear Glass Lens (Standard)	TB - Textured Black SM - Matte Silver AC - Antique Copper AS - Antique Silver BT - Bronze Mist CP - Copper KC - Kenworth Chrome SN - Sand SW - Swedish Steel BZ - Textured Bronze TW - Textured White RAL Colors or Custom Match - Consult Factory	30K - 3000K Color Temperature 40K - 4000K Color Temperature 51K - 5100K Color Temperature PCL120 - Photocell 120V PCL277 - Photocell 277V L25.2 - Six 4.2W LED Modules 30K - 3000K Color Temp. - 3 Nichia NS3x183 Series LEDs Per Module - SW30Bin, Color Temp = 3000K Nominal - Voltage Regulated at 12 Volts by Driver - 80 CRI typ. (75 CRI min) 1410 TOTAL Lumens - 26W Input = Estimated 54.2 Lumens Per Watt L25.2 - Six 4.2W LED Modules 40K - 4000K Color Temp. - 3 Nichia NS3x183 Series LEDs Per Module - SW30Bin, Color Temp = 3000K Nominal - Voltage Regulated at 12 Volts by Driver - 80 CRI typ. (75 CRI min) 1526 TOTAL Lumens - 26W Input = Estimated 58.7 Lumens Per Watt L25.2 - Six 4.2W LED Modules 51K - 5100K Color Temp. - 3 Nichia NS3x183 Series LEDs Per Module - SW51Bin, Color Temp = 5100K Nominal - Voltage Regulated at 12 Volts by Driver - 80 CRI typ. (75 CRI min) 1680 TOTAL Lumens - 26W Input = Estimated 64.6 Lumens Per Watt

REPLACEMENT PARTS

PART NO.

Replacement Clear Tempered Glass Lens	37067
Replacement Frosted Tempered Glass Lens	3706762

NOTES

We reserve the right to revise the design or components of any product due to parts availability or change in UL standards, without assuming any obligation or liability to modify any products previously manufactured, and without notice.

ARRA 2009



BUY AMERICA ACT

**Definition of 40,000 hours: Lifetime Rating is Based on Lamp Manufacturers' LM80 Test Results Which Utilized an Exponentially Decaying Model, a Standard Used by The Department of Energy, as Well as by Other Manufacturers.